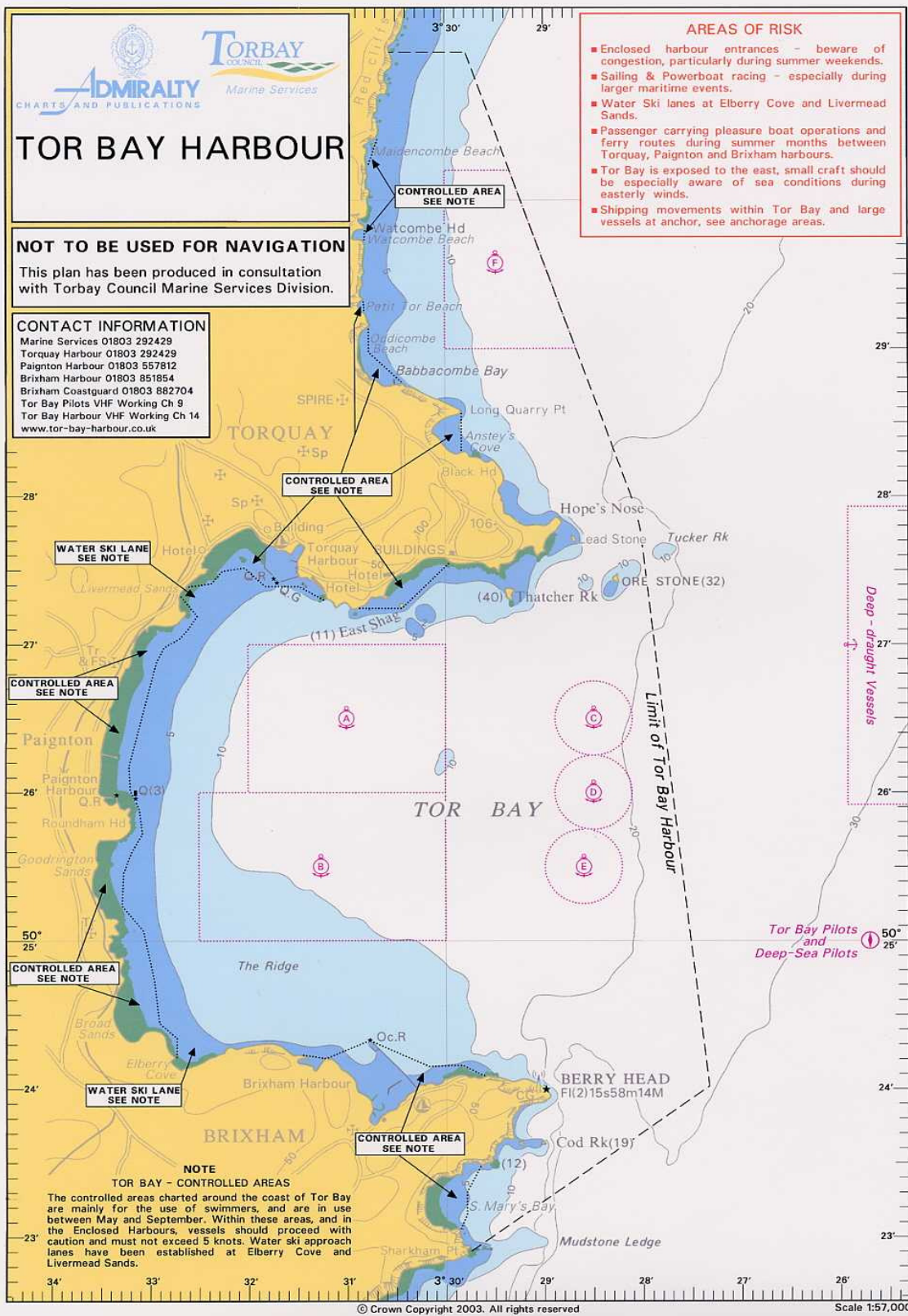


# TOR BAY HARBOUR

**NOT TO BE USED FOR NAVIGATION**  
 This plan has been produced in consultation with Torbay Council Marine Services Division.

**CONTACT INFORMATION**  
 Marine Services 01803 292429  
 Torquay Harbour 01803 292429  
 Paignton Harbour 01803 557812  
 Brixham Harbour 01803 851854  
 Brixham Coastguard 01803 882704  
 Tor Bay Pilots VHF Working Ch 9  
 Tor Bay Harbour VHF Working Ch 14  
 www.tor-bay-harbour.co.uk

- AREAS OF RISK**
- Enclosed harbour entrances - beware of congestion, particularly during summer weekends.
  - Sailing & Powerboat racing - especially during larger maritime events.
  - Water Ski lanes at Elberry Cove and Livermead Sands.
  - Passenger carrying pleasure boat operations and ferry routes during summer months between Torquay, Paignton and Brixham harbours.
  - Tor Bay is exposed to the east, small craft should be especially aware of sea conditions during easterly winds.
  - Shipping movements within Tor Bay and large vessels at anchor, see anchorage areas.



**NOTE**  
**TOR BAY - CONTROLLED AREAS**  
 The controlled areas charted around the coast of Tor Bay are mainly for the use of swimmers, and are in use between May and September. Within these areas, and in the Enclosed Harbours, vessels should proceed with caution and must not exceed 5 knots. Water ski approach lanes have been established at Elberry Cove and Livermead Sands.